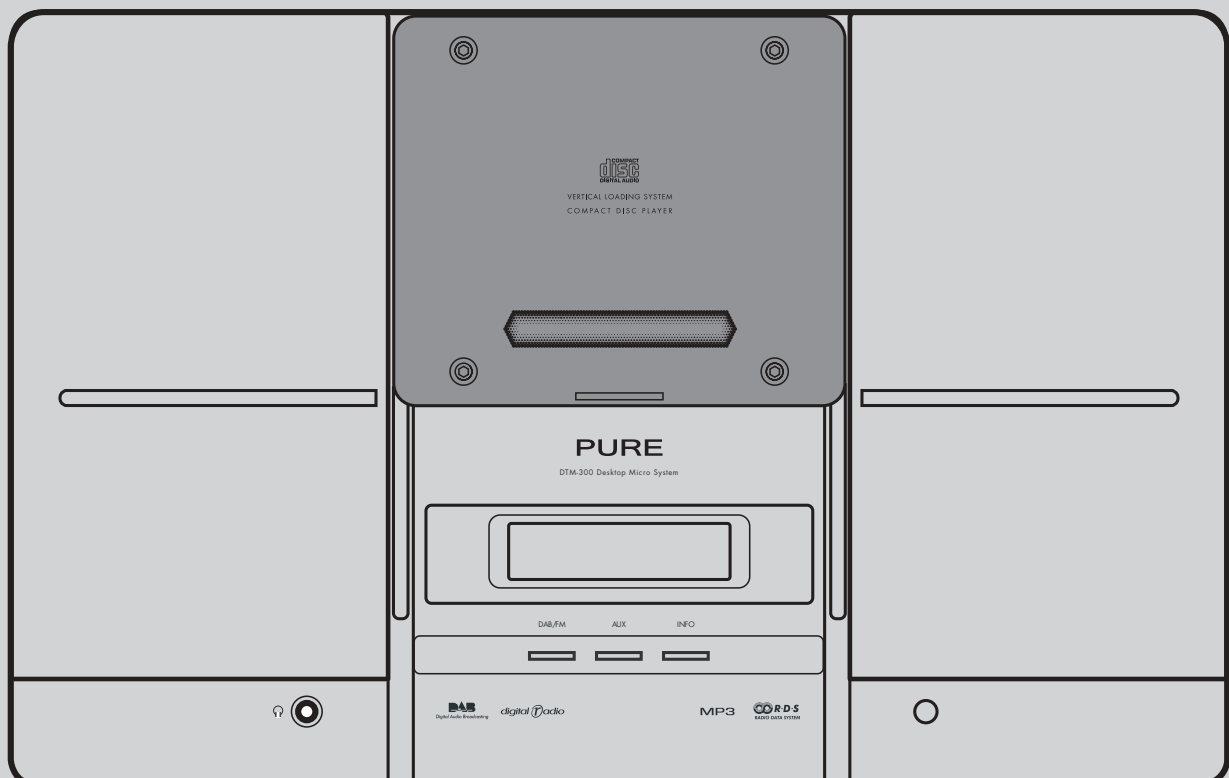


DTM-300

Desktop Micro System



DAB
Digital Audio Broadcasting

digital **Radio**

RDS

compact disc
DIGITAL AUDIO

MP3

PURE

Safety instructions



Keep the unit away from heat sources such as radiators, heaters or other appliances that produce heat and ensure naked flame sources, such as lighted candles are not placed on or near the unit.

Ensure that the unit is not placed in such a way as to interfere with proper ventilation such as in enclosed bookcases or cupboards.

Ensure the ventilation openings are not covered by items such as newspapers, tablecloths, curtains, etc.

Do not expose the unit to direct sunlight.

Do not use the unit near water.

Avoid objects or liquids getting into the unit. Do not expose to dripping or splashing and ensure that objects filled with liquids, such as vases, are not placed on or near the unit.

Do not remove screws from or open the unit casing.

CLASS 1 LASER PRODUCT

Copyright

Copyright 2005 by Imagination Technologies Limited. All rights reserved. No part of this publication may be copied or distributed, transmitted, transcribed, stored in a retrieval system, or translated into any human or computer language, in any form or by any means, electronic, mechanical, magnetic, manual or otherwise, or disclosed to third parties without the express written permission of Imagination Technologies Limited.

Disclaimer

Imagination Technologies Limited makes no representation or warranties with respect to the content of this document and specifically disclaims any implied warranties of merchantability or fitness for any particular purpose. Further, Imagination Technologies Limited reserves the right to revise this publication and to make changes in it from time to time without obligation of Imagination Technologies Limited to notify any person or organisation of such revisions or changes.

Trademarks

DTM-300, PURE, the PURE logo, PURE Digital, the PURE Digital logo, Imagination Technologies, and the Imagination Technologies logo are trademarks or registered trademarks of Imagination Technologies Limited. All other product names are trademarks of their respective companies.

Warranty information

Imagination Technologies Ltd. warrants to the end user that this product will be free from defects in materials and workmanship in the course of normal use for a period of two years from the date of purchase. This guarantee covers breakdowns due to manufacturing or design faults; it does not apply in cases such as accidental damage, however caused, wear and tear, negligence, adjustment, modification or repair not authorised by us. Please register your product on our website at www.pure.com/register or by filling in and returning your warranty card. Should you have a problem with your unit please contact your supplier or contact PURE Support at the address shown on the rear of this manual.

Credits

This manual was written by Bruce Murray. It is a product of PURE Digital, Imagination Technologies Ltd., Imagination House, Home Park Estate, Kings Langley, Herts, WD4 8LZ, UK.

Contents

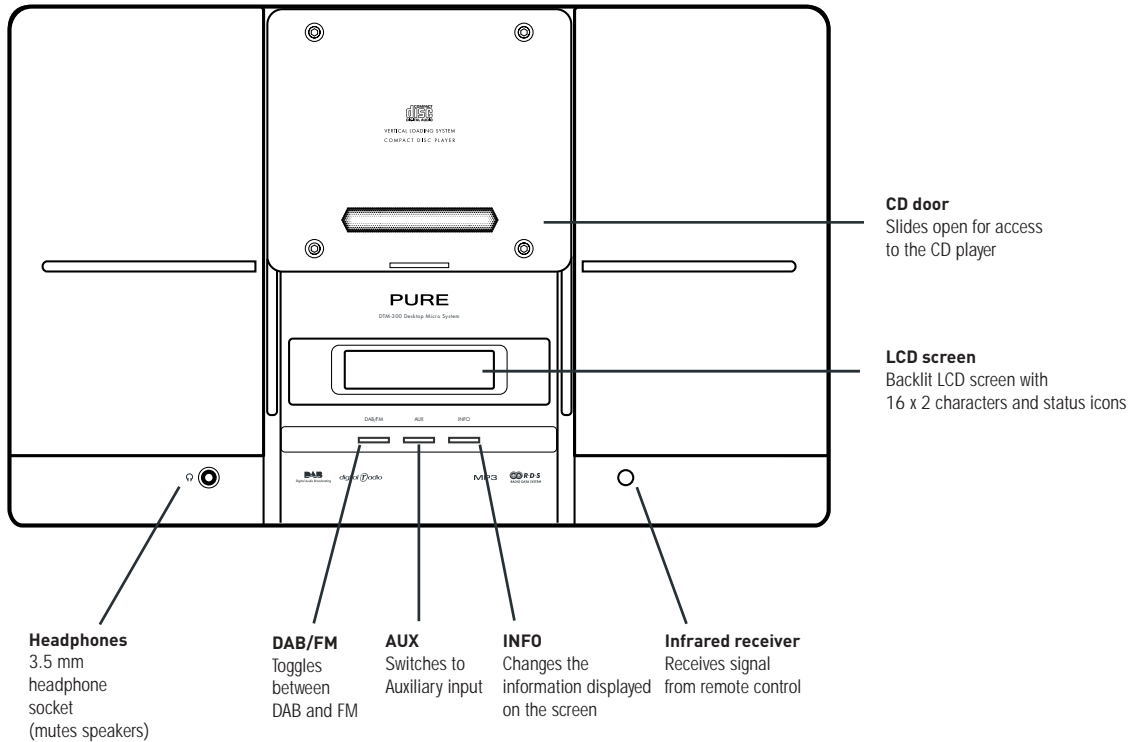
Getting started	2
Overview diagrams	2
Switch on and off.....	4
Navigating menus	4
Listening to DAB radio	5
Selecting a station	5
Changing the information displayed	5
Storing and recalling presets	5
Changing DAB options.....	5
Listening to a CD.....	7
Selecting a CD track.....	7
Selecting an MP3 file	7
Changing the information displayed	7
Setting CD track repeat options	7
Listening to FM radio	8
Selecting a station	8
Changing the information displayed	8
Storing and recalling presets	8
Changing FM stereo mode	8
Listening to an auxiliary source	9
Setting clock, timer and alarms	10
Set time	10
Set alarm	10
Sleep timer	10
Setting audio levels	11
Bass	11
Treble.....	11
Hints and tips.....	12
Technical specifications.....	13

Getting started

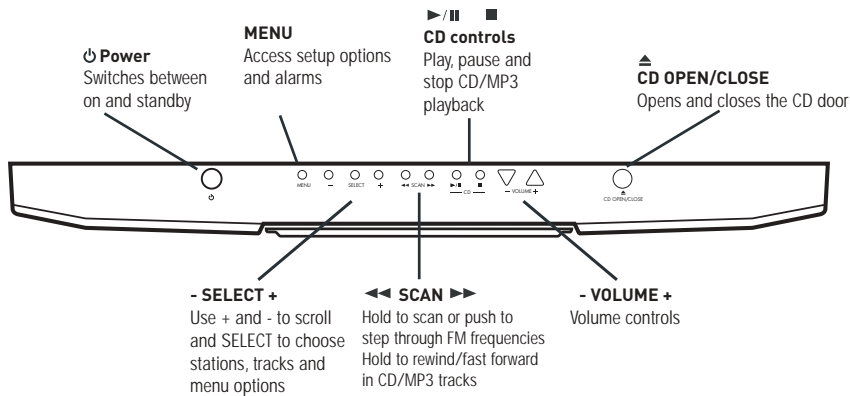
Overview diagrams

These diagrams show the function of controls, the connectors on the rear panel, the remote control and screen icons.

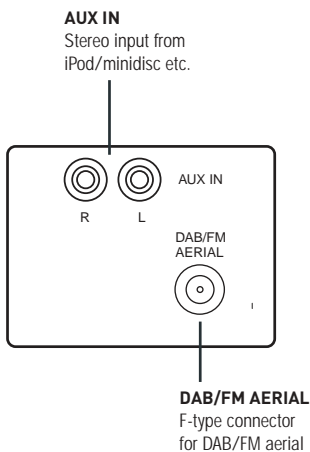
Front panel



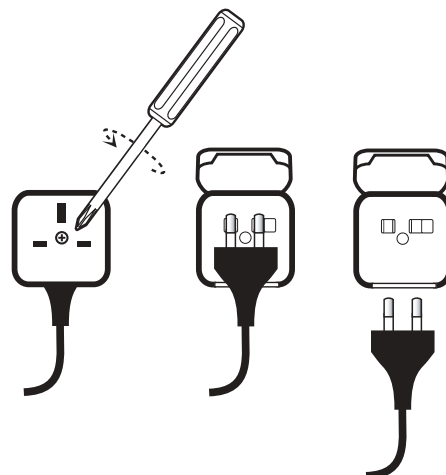
Top panel



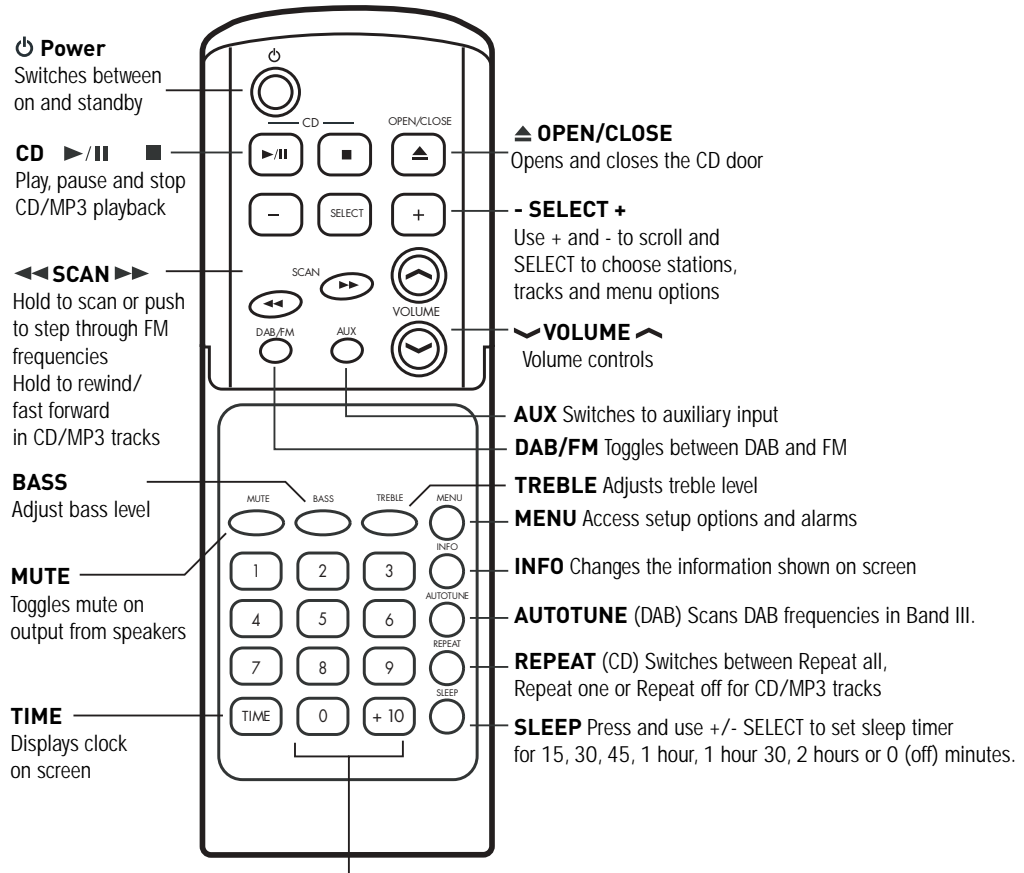
Rear panel



UK adapter removal



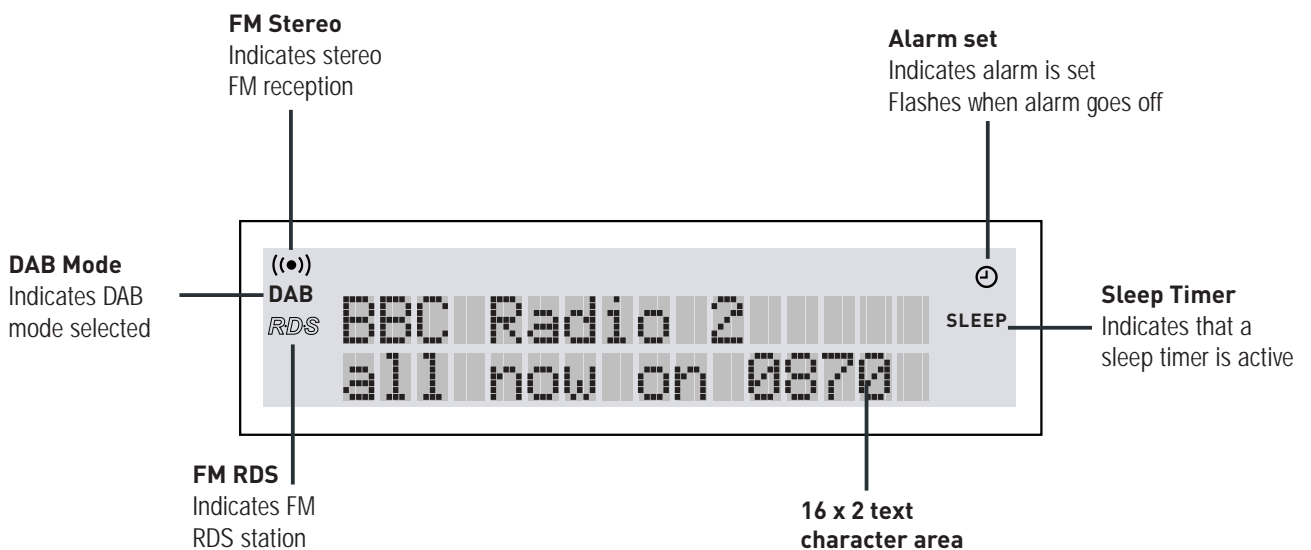
Remote control



Number buttons

Press and hold 1-9 to store a radio preset.
 Press 1-9 to select a radio preset.
 Press 1-9 to quickly access CD or MP3 tracks
 Press +10 first for tracks 10-19, twice first for 20-29 etc.

LCD screen




Switch on and off

When you first plug in your DTM-300 it switches to DAB mode and performs an autotune (full Band III) to find all DAB stations available in your area. These stations are stored in a station list and ordered alphanumerically.

The first station on the station list is selected.

To switch your unit off (standby) - press the  Power button on the unit or remote control. You see the clock on the screen.

To switch your DTM-300 back on press the  Power button again. Your unit starts in whatever mode you were in when you switched off.

Navigating menus

Use the +/- buttons on the remote or main unit to scroll through menu options, stations or track lists and push SELECT to choose options. In most menus if you do not select anything you return to the previous screen.

Listening to DAB radio

To listen to DAB radio push the DAB/FM button until you see the DAB icon on the left of the screen.

When you first switch on your DTM-300 it automatically enters DAB mode, autotunes to find all the DAB stations available in your area and lists them in alphanumeric order.

Selecting a station

To change stations, press the +/- buttons to scroll through the station list, then push the SELECT button to tune to the highlighted station.

The currently selected station is shown at the top of the screen.

Changing the information displayed

DTM-300 has seven DAB display modes which change what you see on the bottom line of the screen while you listen to DAB radio. Push the Display button to switch between the modes.

Text	Scrolling text broadcast by most stations.
Frequency	DAB channel and frequency of the current station.
Broadcast info	Data rate at which the station is being transmitted and stereo or mono indicator. The data rate is set by the stations to suit the type of material being transmitted. High rates generally mean higher quality.
Signal quality	As a guide, values from 85 to 100 indicate good reception, 70 to 84 average reception and 0 to 69 poor reception.
Content	Description of the content broadcast by the station.
Multiplex	Name of the multiplex the current station belongs to. Multiplexes are groups of stations broadcast by a single operator.
Time and Date	Time and date broadcast by the multiplex.

Storing and recalling presets

You can store up to 9 of your favourite stations as presets which you can then access quickly using the numbered buttons on the remote control.

To store a preset - Hold down the numbered button you want to store the current station under. The preset is stored, overwriting any previous one.

To recall a preset - Press the numbered button for the preset you want to listen to.

Changing DAB options

To customise the way your DTM-300 works in DAB mode push the Menu button and select one of the following options:

Station order

Change the order of stations on your station list using this option. The current order is shown at the top of the screen. Choose from the following:

- Alphanumeric** Displays all stations in alphanumeric order.
- Multiplex** Lists stations in groups according to their multiplex. Multiplexes are groups of stations owned and broadcast by a multiplex operator.
- Trim stn. list** Removes inactive stations from the station list. Inactive stations are those on your station list but not currently available, marked with a '?'.
- Fav station** Displays your most listened to stations at the top of the station list and the others below. Your favourite stations are selected by how long you listen to each station and indicated by a ♥ next to the name in the station list.
- ♥ → presets** Available only when Favourite station order (above) has been selected. Transfers your favourite stations to presets overwriting any presets currently stored.

Autotune

Update your DAB station list using this option. Scans the full range of digital frequencies in Band III and adds any new stations found to the station list. You may want to do this if you move the unit.

Manual tune

Manually tune to new DAB stations or fine tune your reception using this option.

You see a list of channels and frequencies. Each multiplex has a different channel and frequency (E.g., BBC is channel 12B and Digital One is 11D).

1. Select the channel you want from the list.
You see a signal strength display. The marker indicates the minimum required level for reception and the filled blocks indicate the current level.
2. Move your aerial and try to raise the current level to the marker or beyond. You see the multiplex name if a good signal is received and the stations in that multiplex are added to the station list.

DRC Value

Make the quieter sounds in a broadcast easier to hear at low volume or in a noisy environment using this option. The DRC (Dynamic Range Control) level of a broadcast is set by the station and sent with the signal. At the time of writing only stations such as BBC Radio 3 and 4 regularly broadcast a DRC level. Check with the broadcasters to find out if they use DRC on their stations.

Select one of the following options:

- DRC off** DRC is switched off. Any DRC level broadcast is ignored. This is the default setting.
- DRC half** DRC level is set to half that sent with the broadcast.
- DRC full** Applies the DRC level as sent with the broadcast.

Listening to a CD

To listen to a CD press the CD OPEN/CLOSE (▲) button to open the CD door and gently push your CD label side out onto the spindle in the CD player. Push the CD OPEN/CLOSE button again to close the CD door.

Press play to switch to CD mode, load the CD and start playback of the first track. If you insert a CD with MP3 files loading the CD may take longer. Your unit scans the disc and creates a list of all the folders and files on the CD.

Selecting a CD track

To change tracks on a CD, either:

- press the +/- buttons to select the next/previous track
- use the SCAN buttons to fast rewind/fast forward to another track
- select a track number using the numbered buttons on the remote

Selecting an MP3 file

MP3 file and folders (including nested folders) are displayed in a single list with folders first (Indicated by an arrow →), then files (indicated by an asterisk *). To see the list press the Stop (■) button and use the +/- and SELECT buttons to browse the list or select a file.

If you select a folder, the list will change to show the files within that folder. Press the Stop button again to go back to the complete folder list.

Note Any files found in the root folder on the CD are listed in a folder called → ROOT.

To change MP3 tracks on a CD, either:

- press the +/- buttons to select the next/previous track in the current folder
- use the SCAN buttons to fast rewind/fast forward to another track in the current folder
- select a track number using the numbered buttons on the remote tracks are numbered sequentially the first track (1) in the first folder.

Changing the information displayed

To change what you see on screen while you listen to a CD push the INFO button. Choose from the following options:

Track elapsed Time the current track has been playing, or if stopped total time and number of tracks on the CD.

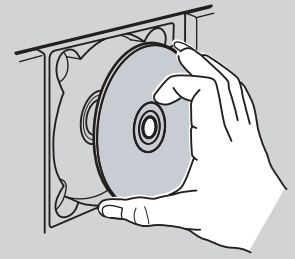
Track remaining Time remaining of the current track.

Disc remaining Time remaining of current CD.

If playing an MP3 CD the bottom line of the display shows ID3 tag text such as track information, artist, etc., if included with the file.

Setting CD track repeat options

Press the REPEAT button on the remote control in CD mode to switch between repeating one, all or none of the tracks on the CD automatically.



Inserting a CD

Listening to FM radio

To listen to FM radio push the DAB/FM button until you see FM on the left of the screen and the frequency display.

Selecting a station

To select a station either:

- press the SCAN buttons to step up/down the frequency range in steps of 0.05 MHz or hold down for a second to seek to the next station with a strong signal.
- press the +/- buttons to skip to the next/previous FM preset
- press a numbered button on the remote to select an FM preset directly

If you are listening to an RDS station you see the RDS icon on screen and extra RDS information may be available as described below.

If you are listening to a stereo station you see the Stereo icon (**(••)**) on screen.

Changing the information displayed

To change what you see on screen while you listen to FM radio push the Display button. Choose between the following options:

RadioText	Dynamic text broadcast by some RDS stations.
Broadcast info	Description of the content broadcast by the station and its frequency. RDS stations only.
Date and time	Date and time obtained from the FM signal. RDS stations only.

Storing and recalling presets

You can store up to 9 of your favourite stations as presets which you can then access quickly using the numbered buttons on the remote control.

To store a preset - Hold down the numbered button you want to store the current station under. The preset is stored, overwriting any previous one.

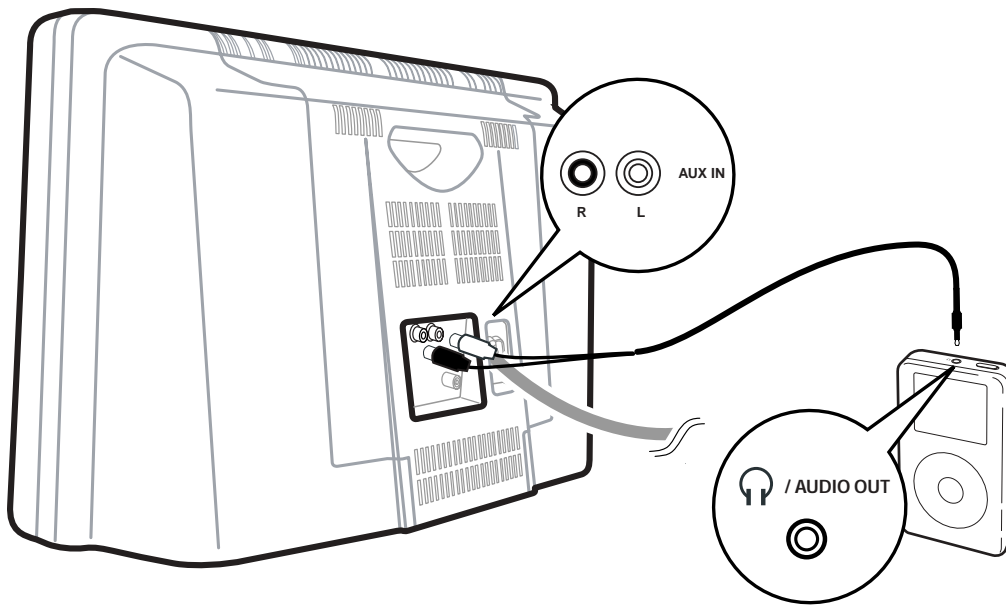
To recall a preset - Press the numbered button for the preset you want to listen to.

Changing FM stereo mode

To change between Stereo and Mono press the Menu button, select FM mode and choose between Stereo or Mono. Mono may be clearer for stations with weak signals. The current mode is shown on the top line of the display.

Listening to an auxiliary source

To listen to an audio source such as an iPod or MiniDisc player attached to the AUX IN sockets on your DTM-300 push the AUX button.



Setting clock, timer and alarms

Push the menu button and use +/- and SELECT to choose the Clock settings option to view and set the time, a timer or an alarm. Choose one of the following options:

Set time

The current time is shown on the top line of the display. Press SELECT and the +/- buttons to change the hour (24 hour clock) and minutes.

Press the TIME button on the remote at any time to see the clock.

Set alarm

The current settings are shown on the top line of the display. Press SELECT to change the alarm settings:

Press the +/- and SELECT buttons to set an alarm time, mode [DAB/FM/CD] and set the alarm on or off. DAB or FM alarms tune to the last station you were tuned to. CD alarms play the CD from the first track.

Note If no CD is inserted, or the station you selected is unavailable at the time an alarm is due to go off it will not work.

When the alarm is set you see the Alarm icon (🕒) on the screen. The alarm icon flashes when the alarm goes off.

To cancel the alarm and leave the unit switched on press SELECT or press the ⏻ Power button to cancel the alarm and switch off.

Note Alarm volume will be whatever the current volume is set to or whatever the volume was set to when you last had your unit switched on.

Note Alarm time uses the clock you set as described above so ensure you set this correctly before setting an alarm.

Sleep timer

The current setting is shown on the top line of the display. Press SELECT and the +/- buttons to change the time after which you want your DTM-300 to switch off. Choose between 15, 30, 45, 60, 1 hour 30 minutes and 2 hours and push SELECT to confirm. To switch the sleep timer off, set the time to zero.

You see the SLEEP timer icon on the screen when a sleep timer is set. You can check the sleep time remaining by returning to the Sleep timer menu.

You can also access the Sleep timer directly using the SLEEP button on the remote control.

Setting audio levels

Push the menu button and use +/- and SELECT to choose the Audio mode option to adjust bass and treble levels. Choose one of the following options:

Bass

Press SELECT and use +/- to adjust the bass level between -05 and +05.

Press SELECT again to confirm the change and exit.

Press MENU or wait a moment to exit.

Treble

Press SELECT and use +/- to adjust the treble level between -05 and +05.

Press SELECT again to confirm the change and exit.

Press MENU or wait a moment to exit.

You can also access the bass and treble menu options directly using the BASS and TREBLE buttons on the remote control.

Hints and tips

(>>/<<) DAB Secondary services

Secondary services accompany some stations, providing extra information or alternative content and may only be broadcast at certain times. At the time of writing not many secondary services are available. If a station has secondary services available, the station shows '>>' next to its name in the station list and the secondary service appears next to the station in the list. A secondary service has a '<<' before its name in the station list.

(?) Inactive or unavailable DAB stations

Inactive or unavailable stations are those which appear on the station list but are not currently available because either you are outside the broadcast area, have lost reception or the station is not currently broadcasting. Unavailable stations have a '?' before their name on the station list. If you select a station which has this symbol, DTM-300 will retry the station and, if still unavailable, returns to the last station you were listening to.

I hear a 'burbling' sound on some DAB stations

Although DAB is excellent at providing quality audio from very little signal, the quality can suffer if the signal strength is too low. If that happens, a 'burbling' sound can sometimes be heard. To help reduce this, check that your aerial is mounted as high as possible and the arms are fully extended vertically. If the problem persists try moving your radio or repositioning your aerial using manual tuning.

Screen says 'No stations available' in DAB mode

Check that your aerial is connected and fully extended. Use Autotune to search for stations. Use manual tuning to adjust your aerial or radio position.

Resetting your unit

Resetting your DTM-300 removes all presets, stored stations and favourite station settings and resets all options to defaults. To reset:

1. Press and hold the Menu button for three seconds. You see 'Press SELECT to confirm reset' on screen.
2. Press the SELECT button to confirm the reset or press no buttons to cancel the reset.

Clock shows the wrong time

There are three clock displays available on your DTM-300. The first is the built-in clock which you view by pressing the TIME button on the remote. You set this clock using the Clock settings > Set time menu option.

The second clock is broadcast by most DAB radio stations and the third by some FM (RDS) stations. You can view these clocks by pressing the INFO button until the clock display is shown on screen. These two clocks are controlled by the broadcasters and you cannot adjust the time on these clocks.

Technical specifications

Amplifier

6.5W RMS per channel power output (into 4 Ohms)
Bass and treble tone control
Mute option from remote control.

CD player

CD-R and CD-RW playback compatible
Repeat playback modes
MP3 playback, including support for ID3 tags

DAB

Full Band III (174 - 240 MHz) reception. Fully compliant with ETS 300 401 and capable of decoding all DAB transmission modes 1-4
Fast autotune feature

FM

Supports RDS and RadioText
87.5 - 108 MHz frequency range

Speakers

Separate woofers and tweeters in bass ported cabinet.

Connectors

3.5 mm headphones output
Combined DAB/FM aerial connection
Dual phono for external line level audio input

General

Fully featured remote control
Compliant with the EMC and Low Voltage Directives (89/336/EEC and 73/23/EEC)
Main unit dimensions 435 (w) x 280 (h) x 160 mm (d)
Removable UK power socket adapter
Bootlace aerial supplied
Telephone support and website
Two year warranty

www.pure.com



PURE Digital, Imagination Technologies Ltd., Imagination House, Home Park Estate, Kings Langley, Herts, WD4 8LZ, UK



+44 (0) 1923 277477 support
+44 (0) 1923 277488 sales



+44 (0) 1923 270188



support@pure.com
sales@pure.com



12M76

PURE